

To this day, Page Electronica stands for a team of 140 professionals, fitted with cutting-edge electronic manufacturing equipment & electronic testing solutions. Operating in a 3 team fixed 24 hour shift schedule, 6 days a week. IPC-A-610F class 2 is our standard, class 3 is also feasible on-demand. Page Electronica has a ISO9001 certificate and we regularly draw upon research institutes Sirris & Imec. (www.cedm.be).

At Page Electronica, we highly value building lasting relationships with our employees, customers & suppliers.

4 min. factory tour:

<http://www.youtube.com/watch?v=bhu9vhObJpk>

Our strong suit?

- Flexible in prototyping & medium-sized production
- Fast response time
- Price competitive, low overhead
- Technologically up-to-date
- Full service: participatory design, component purchasing, PCB assembly, coating, cabling, testing & installing

Equipment

Page Electronica has 3 modern SMT lines and offers all most common soldering techniques (wave soldering, selective wave soldering, robot soldering, reflow convection & vapour phase soldering). PAGE NV offers lead-free and lead-processes Our brands consist of Juki, Koh-Young, MPM, Takaya, Heller, Nikon. We annually invest half a million euros in equipment.

www.youtube.com/user/pageelectronica

Processes (Bart Lozie)

Alpha Metals & Rotec (stencils) are our main suppliers, <http://www.page.be/bestukking/designrules>

Design-for-X Manufacturing, Test, Reliability

5 senior engineers, each with over 20 years of electronic design & manufacturing experience. Ideally we initiate contact in the design phase & we are happy to advice & assist with component selection whenever possible. (availability, equivalents & layout) <http://page.be/bestukking/ontwerp-pcb-layout> Ivan Blanckaert - Johan Catteau - Dirk Parasote

Component purchase (Cindy - Ellen - Su)

PAGE Electronica offers standard components supply from our warehouse. (See <http://page.be/stock-bestukking.xls>) Specific components are in agreement with the customer & are often supplied. We ourselves, try to establish strong relationships with our Belgian distributors. We have daily deliveries by Arrow, Avnet, Rutronic, Farnell & Eurocircuits

Prototyping within only a few days\

The R&D is always welcome in our workshop to ascertain how to automate and reduce manual labour. Weekly, we produce 10 up to 20 new designs on average. We're able to work stencil free due to our MY500 paste jet system. This way prototyping cost is often reduced to only several 100 euro's.

Large series, don't search too far

Our SMT lines often run around the clock in 3 shifts. Orders of 500.000 components are assembled within one working day, run on one line for typical prices of 1 eurocent /chip component.. Our SMT team exist of roughly 30 professionals & we have three modern lines at our disposal.

Cable confection: cut-strip-crimp (Stefan)

A team of 10 employees, with modern equipment are ready to help you with assembling your wires and cables.

Burn-in / environmental testing

10 senior technicians, trained to build test equipment, and perform functional tests, boundary scan (JTAG), flying probe test, burn-in and thermo cycling tests. (<http://page.be/bestukking/testen>)

Varnishing & manually pouring/bonding

Nordson Asymtec & PVA coaters: urethane, epoxy & silicone

Shipping & handling

We pack and ship using reusable cardboard or antistatic plastic boxes L60 W40 H33cm & antistatic safe Pink PE bags 40 to 30cm or 60 to 40cm. We offer our own safe and cheap transport service, Thursday's direction Antwerp & Friday's direction Ghent.

Social employment enterprise since 2009

We have 20 employees in social employmentship

Price calculator (100 boards 20*30cm - 800 components)

During PCB layout phase, chose for highest reliability and maximise possibility for automatic assembly / test

- SMD reflow only on top side (+- 2 à 5 eurocent per SMD)
- SMD reflow + PTH in wave soldering – 0.1eur/PTH
- Double-sided Reflow:, extra process-step: 1à 1.5€/board – extra inspection
- Manual assembly: about 10 eurocent per TH/SMD component, and 4 eurocent per manual soldering, ask info about choice for wave selective or robot soldering ; every process step 1à 1.5 €/board

Page Computers is located in the same building as PAGE Electronica but is a separate company, Casselstraat 212.

Customers

We've been working for over 10 years now with Unitron, Televic, Bascules Robbe, Primus, ADB, CMC,... We have grown along with many of our customers. To this day we have 120 active customers in Flanders.

Contact:

Customer contact is done by Tom, Greg, Kristof, Dries, Dieter & Henk. <http://www.page.be/contacteer-ons>



Dries Page

dries@page.be
057/34.67.75



Kristof Vandenberghe

kristof@page.be
057/34.67.81



Gregory D'Hooghe

greg@page.be
057/34.67.61



Tom Callewaert

tom.callewaert@page.be
057/34.67.79



Henk Menu

henk@page.be
057/34.67.85

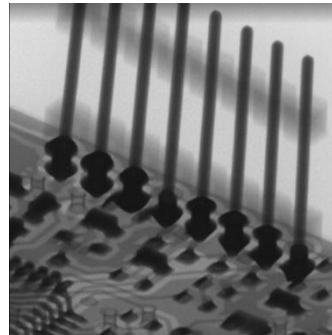
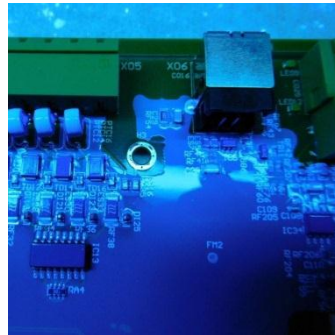
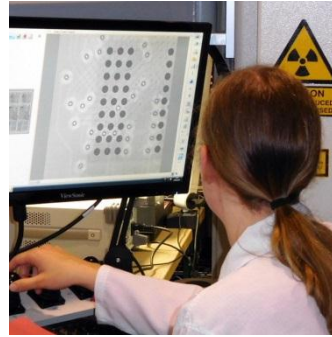
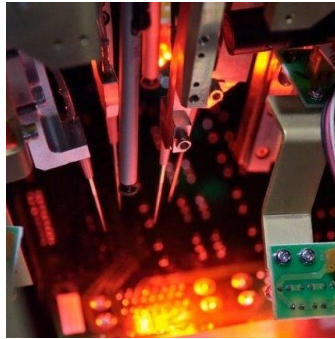


Dieter Swynghedauw

dieter@page.be
057/34.67.62

Investments 2016-2017:

- Film-coater Nordson Asymtec SL940
- KOHYOUNG 3D AOI & SPI 3D AOI Zenith
- Ersas selective soldering Versaflow 3/45
- Workshop doubled in size (5000 m²) centre of Poperinge



Electronic manufacturing
Poperinge
www.page.be

info@page.be 0032 57 346766

- Established in 1994
- PCB assembly – cabling (EMS)
- IPC-A-610 F class 2 & ISO9001
- 140 professionals
- PCB layout advice
- Member of www.edmp.be (Sirris – Imec)
- 11000 electronic component types on stock
- Strong in prototyping & medium-sized production
- Lasting relationships with employees, customers & suppliers